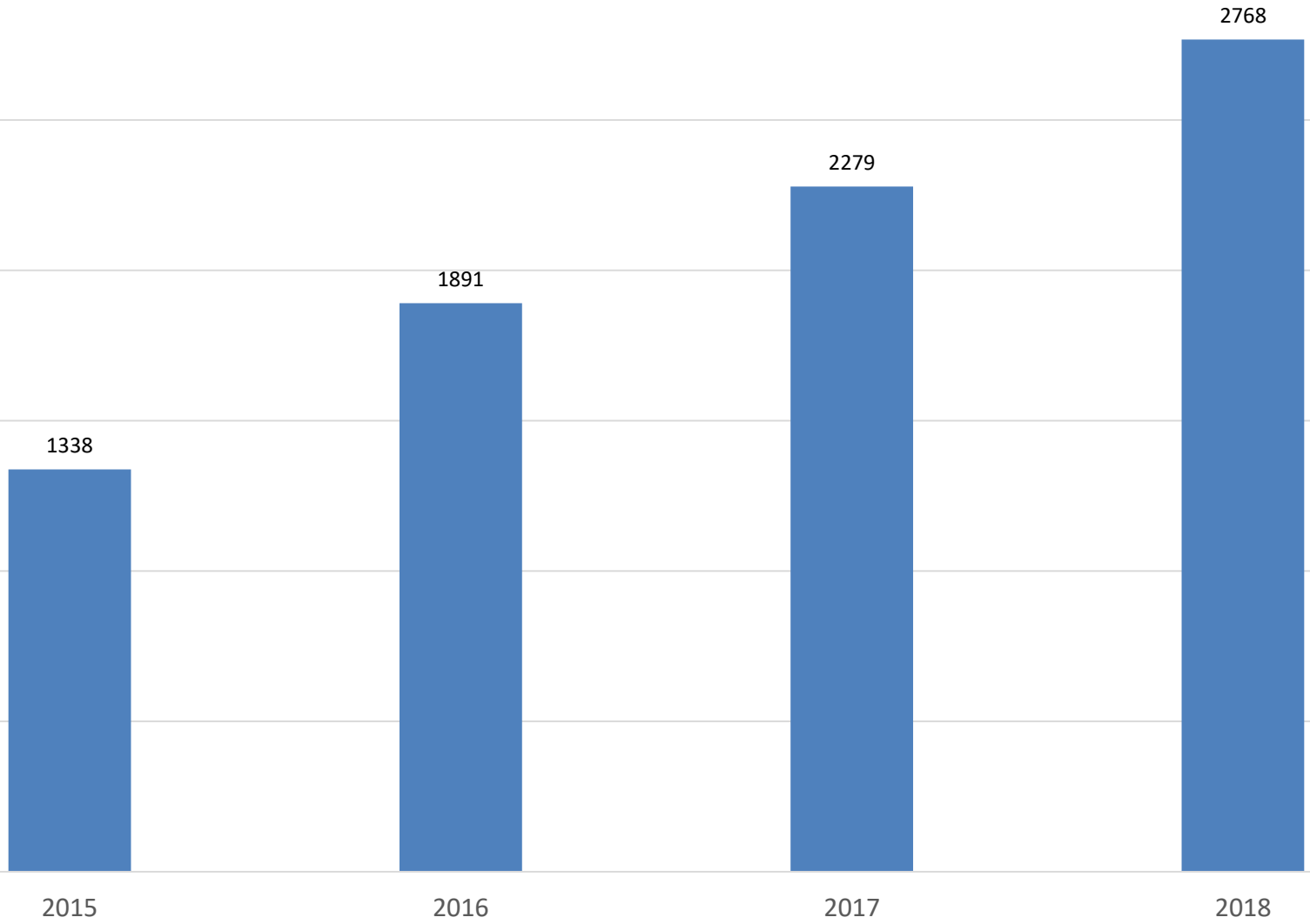
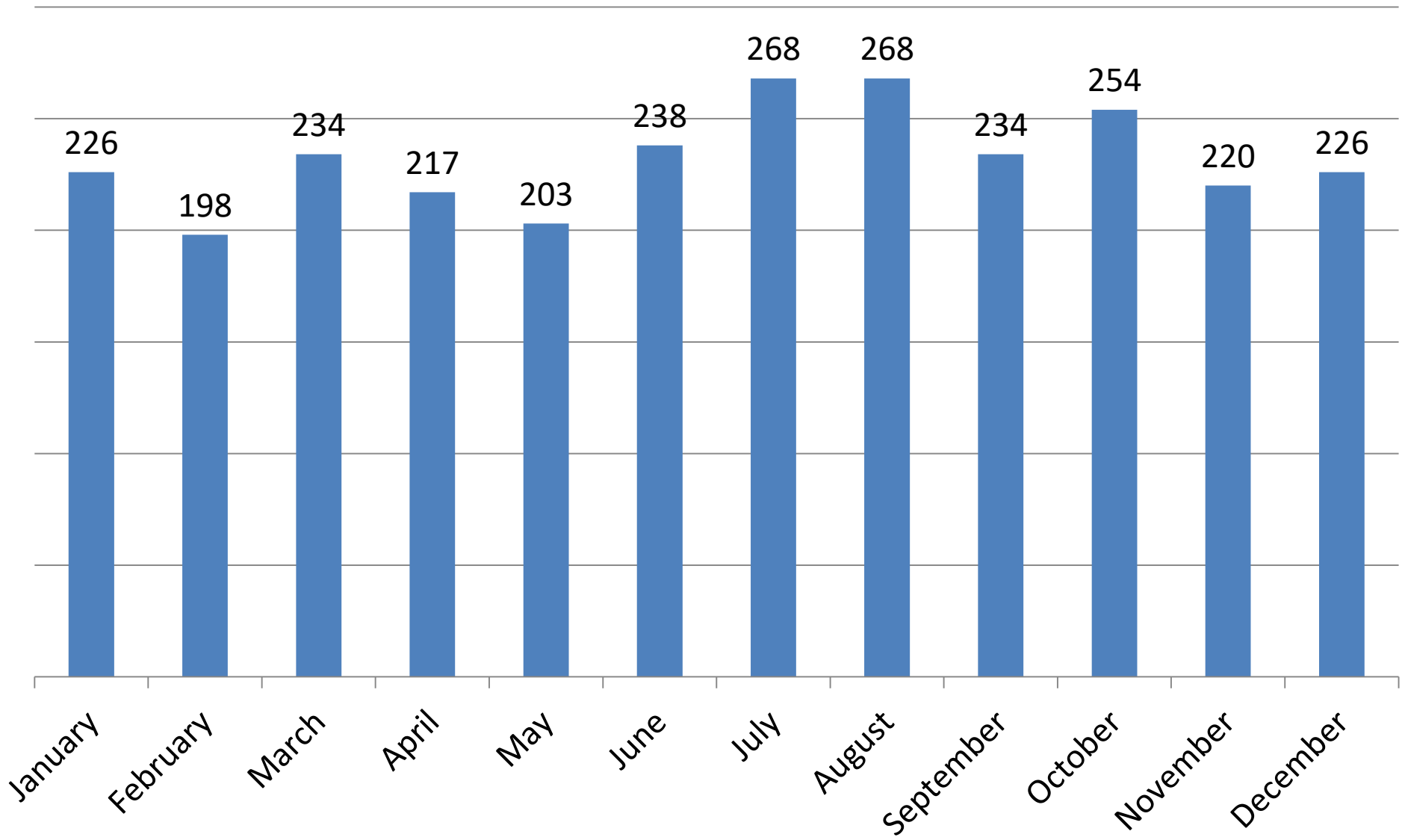


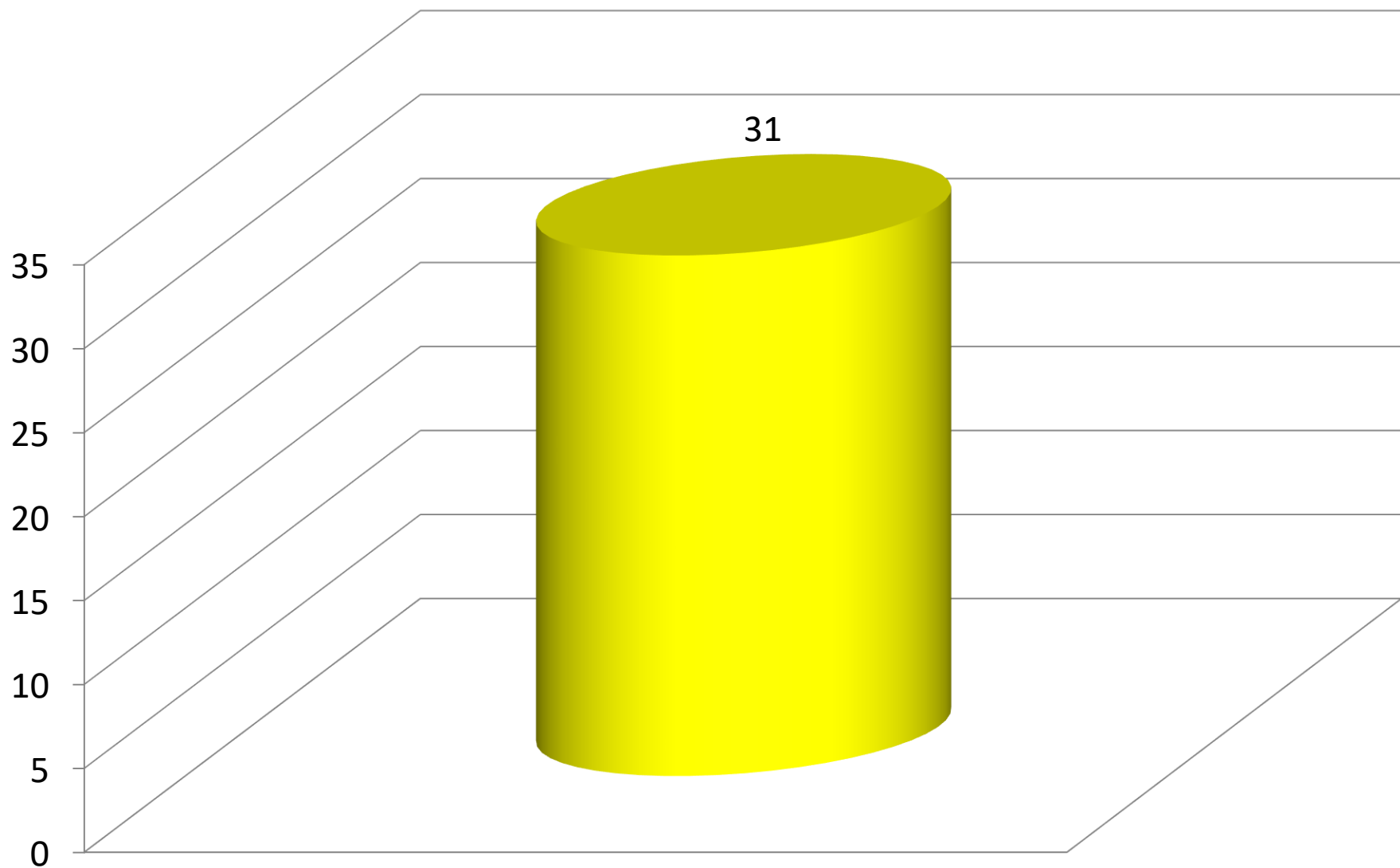
Statistics 2018

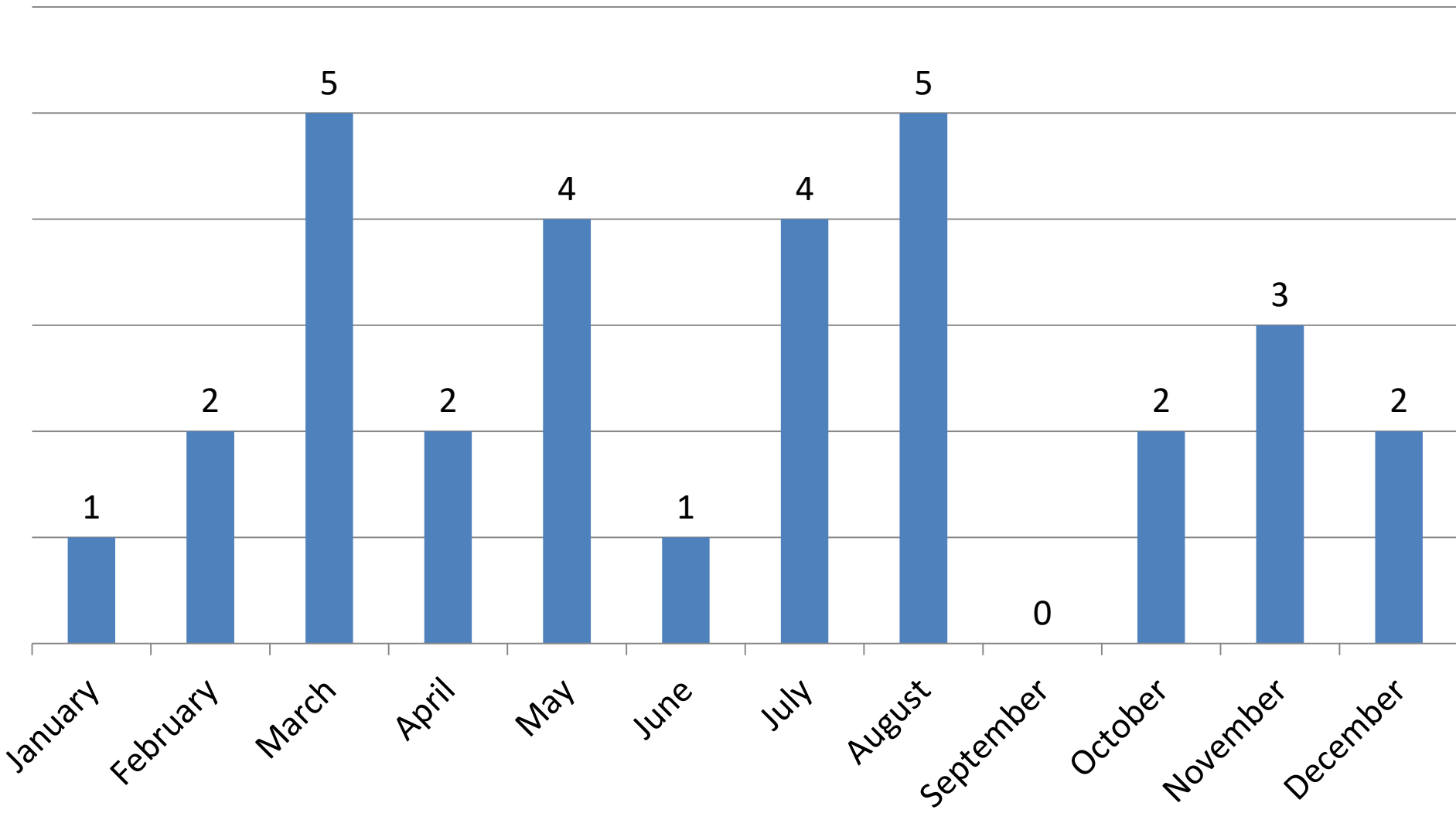




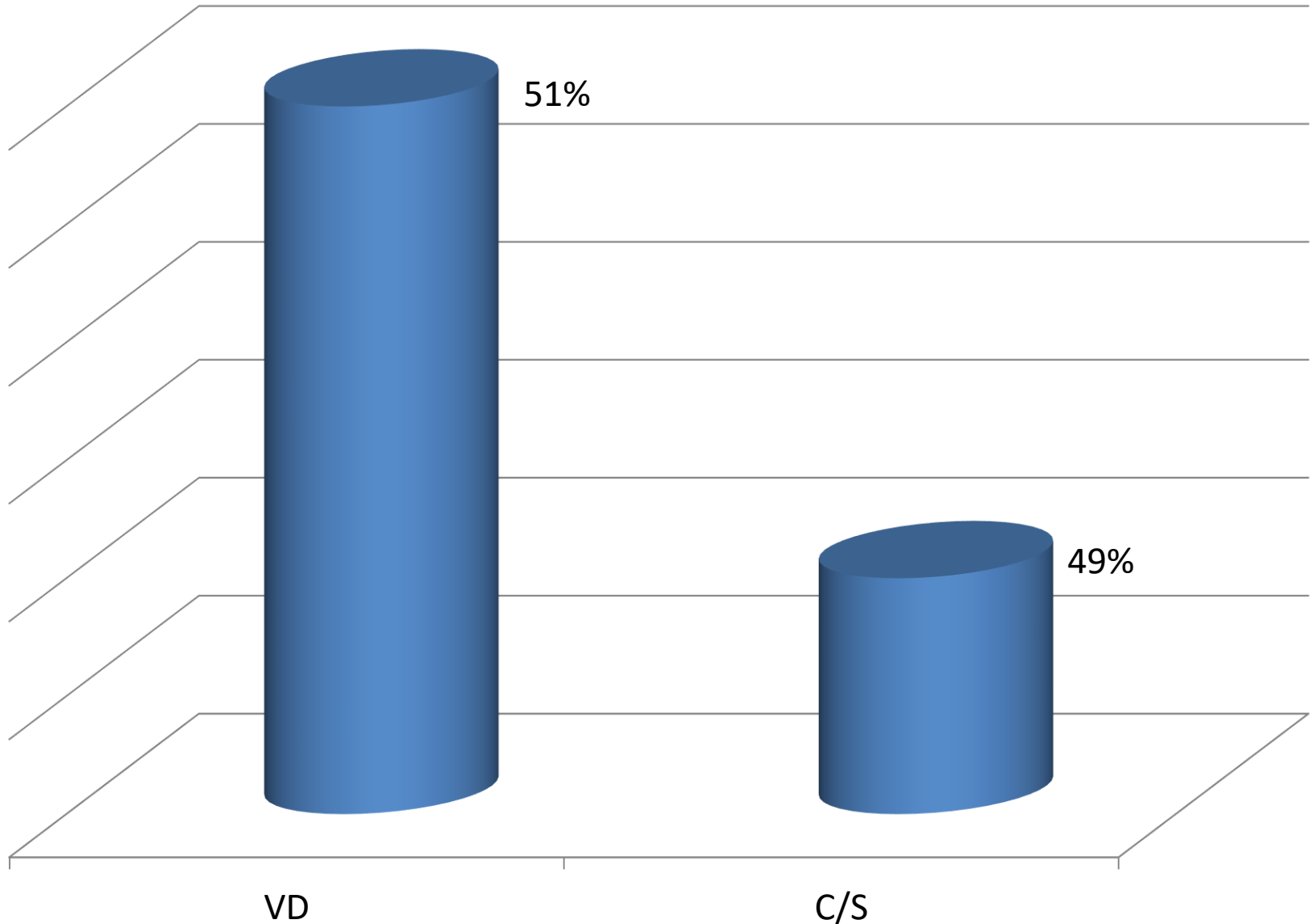


No. of Twins:

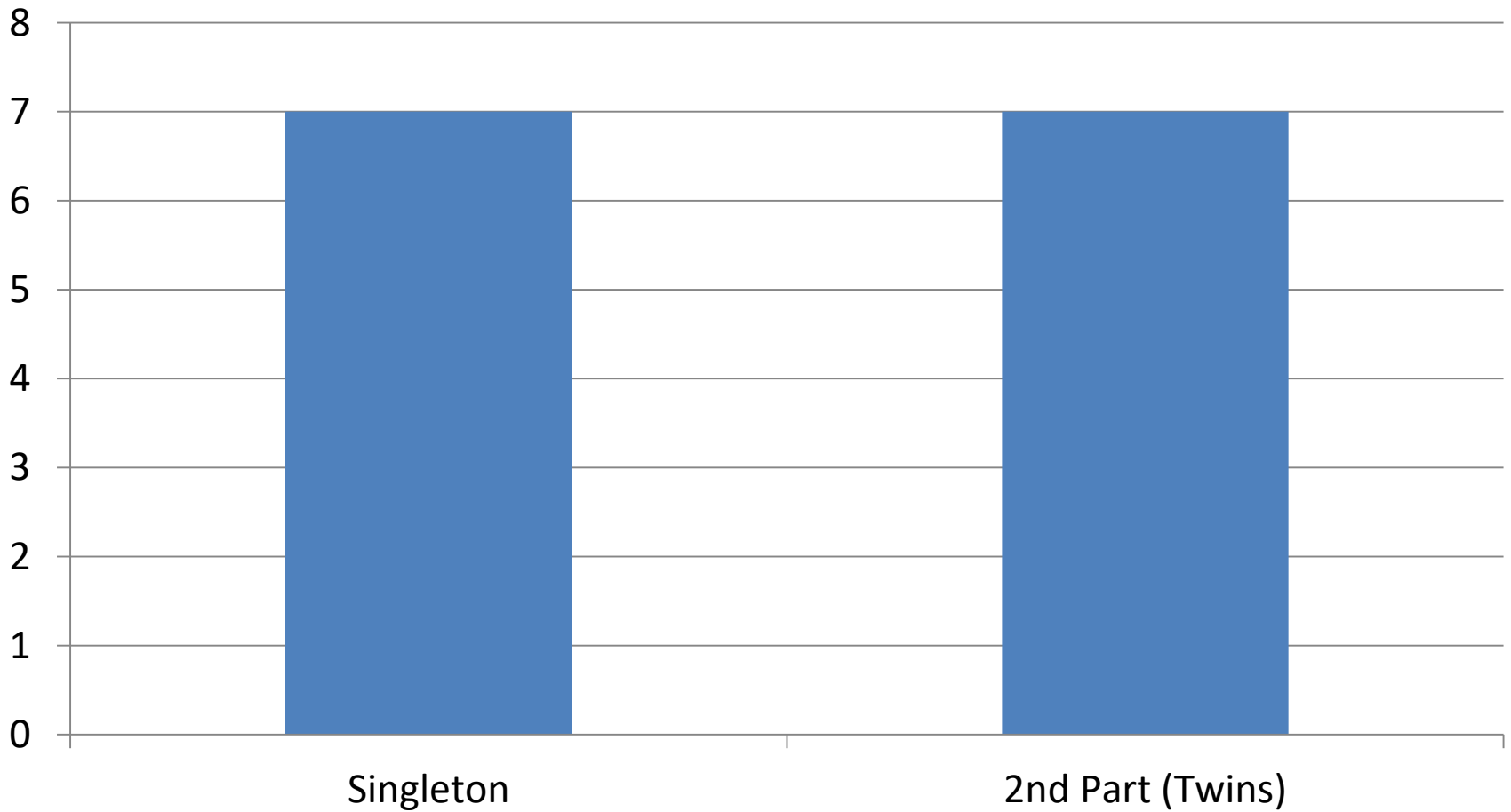




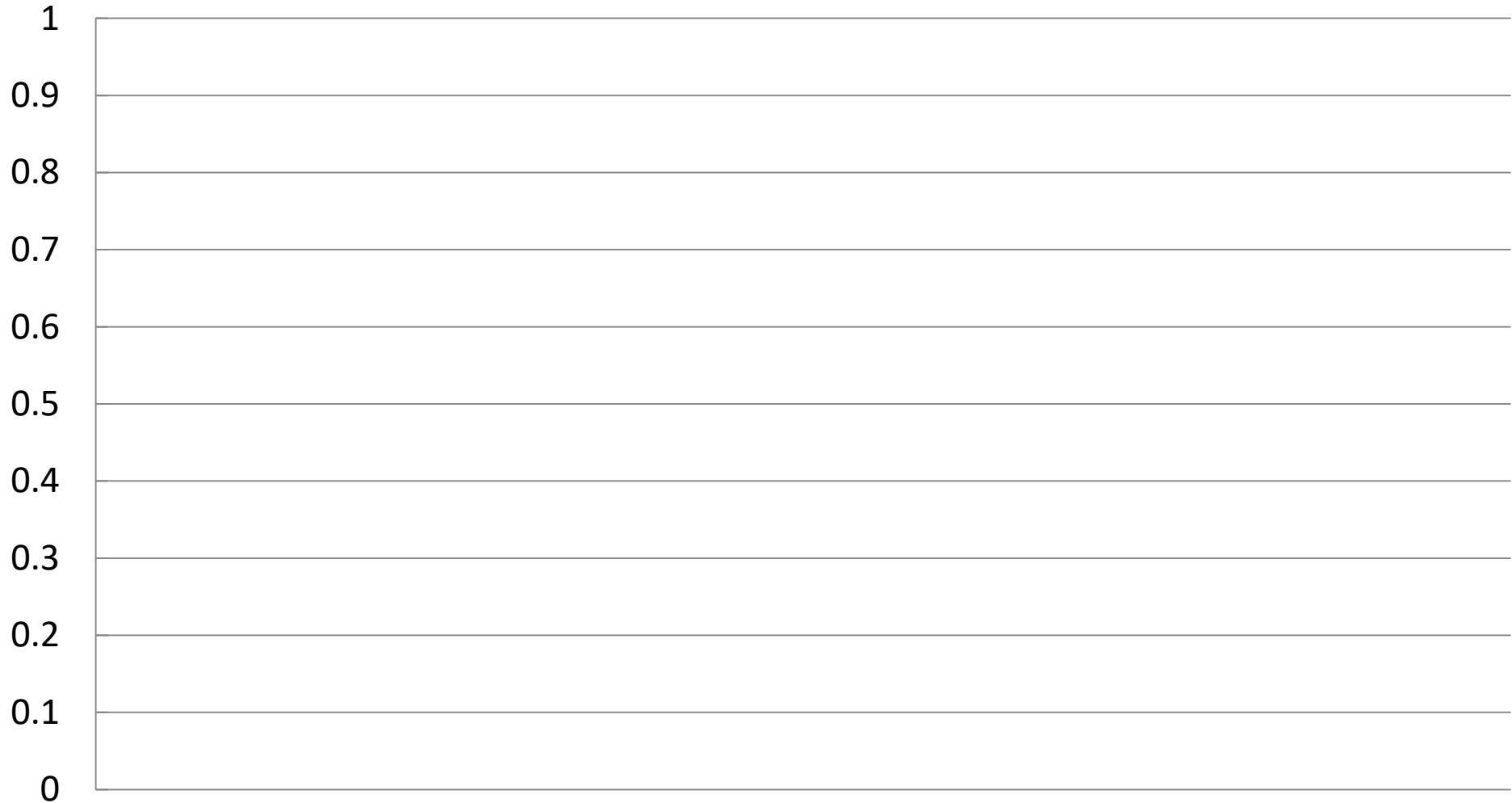
Mode of Twins delivery:



Breech deliveries:

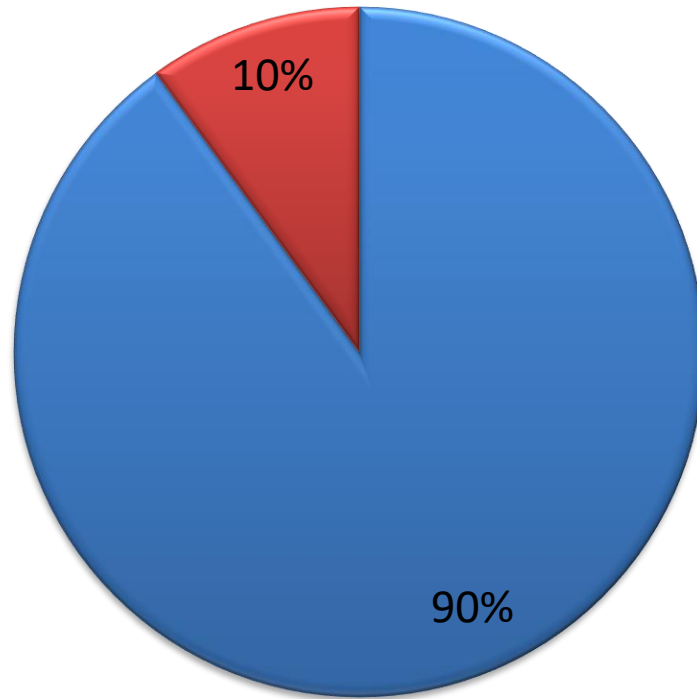


No. of higher order pregnancies:



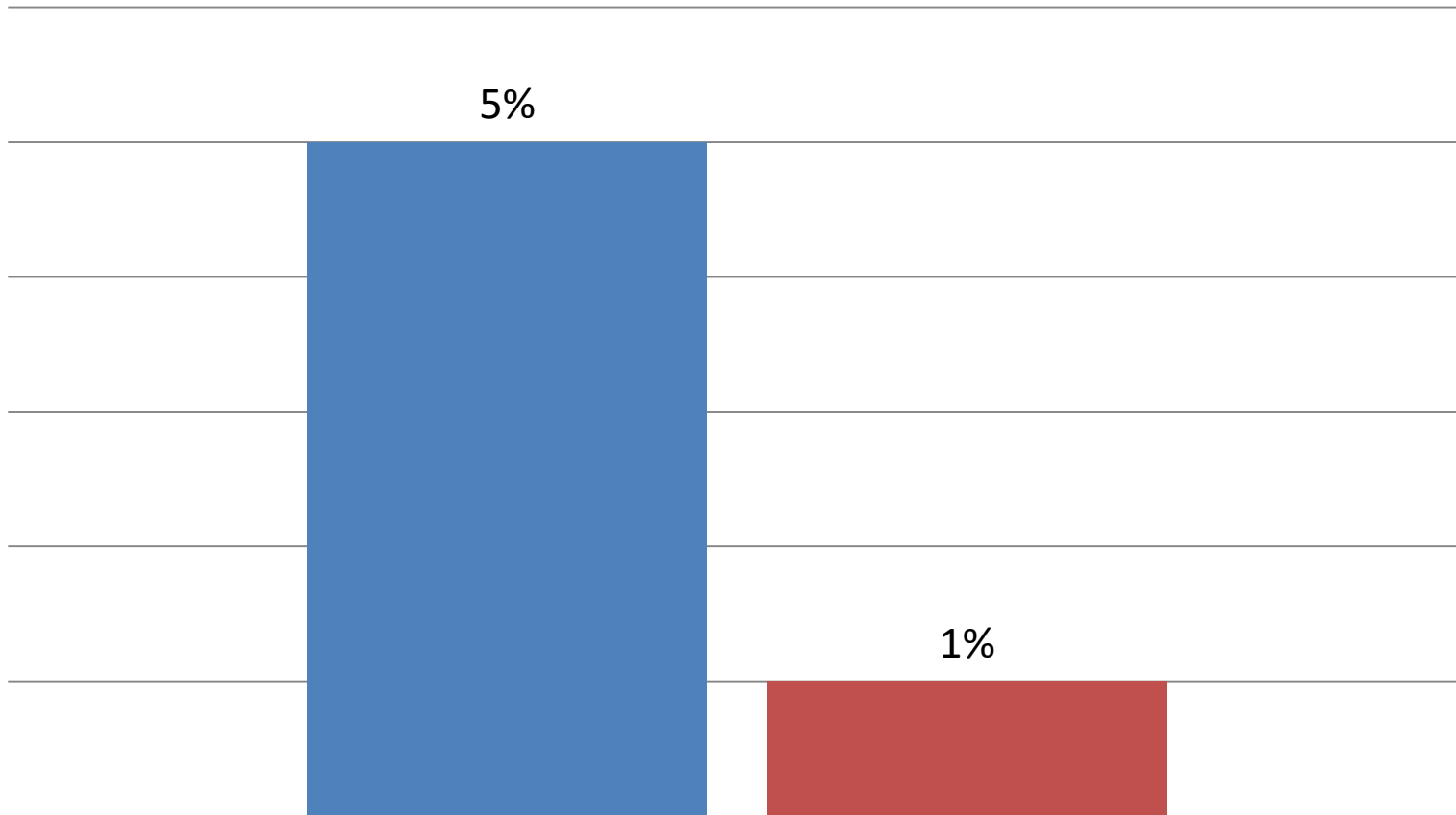
Women Age:

- < 35 y/o
- >35 y/o



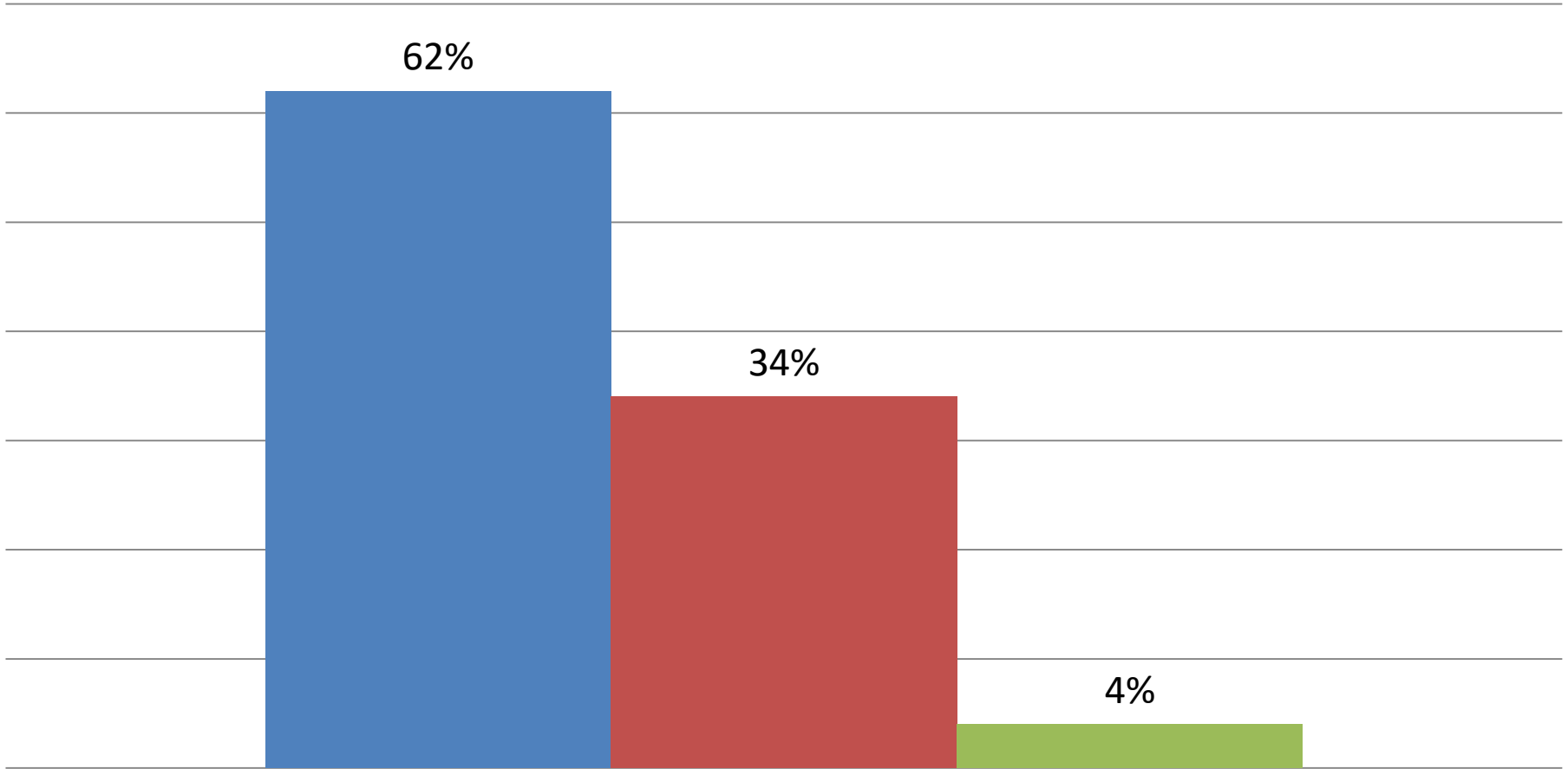
Preterm Deliveries:

■ <37 week
■ <34 week



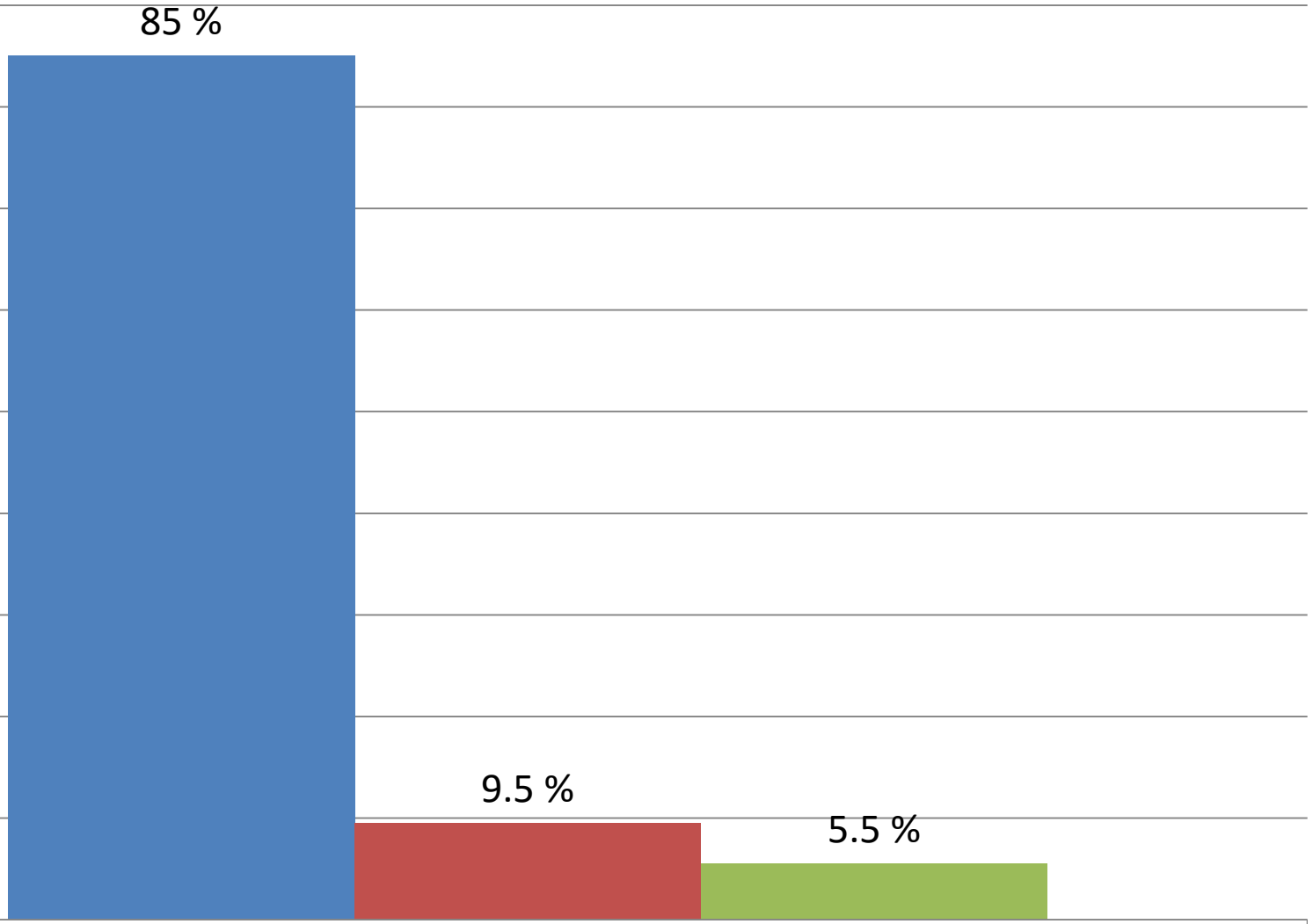
Parity:

■ MP ■ PG ■ GMP

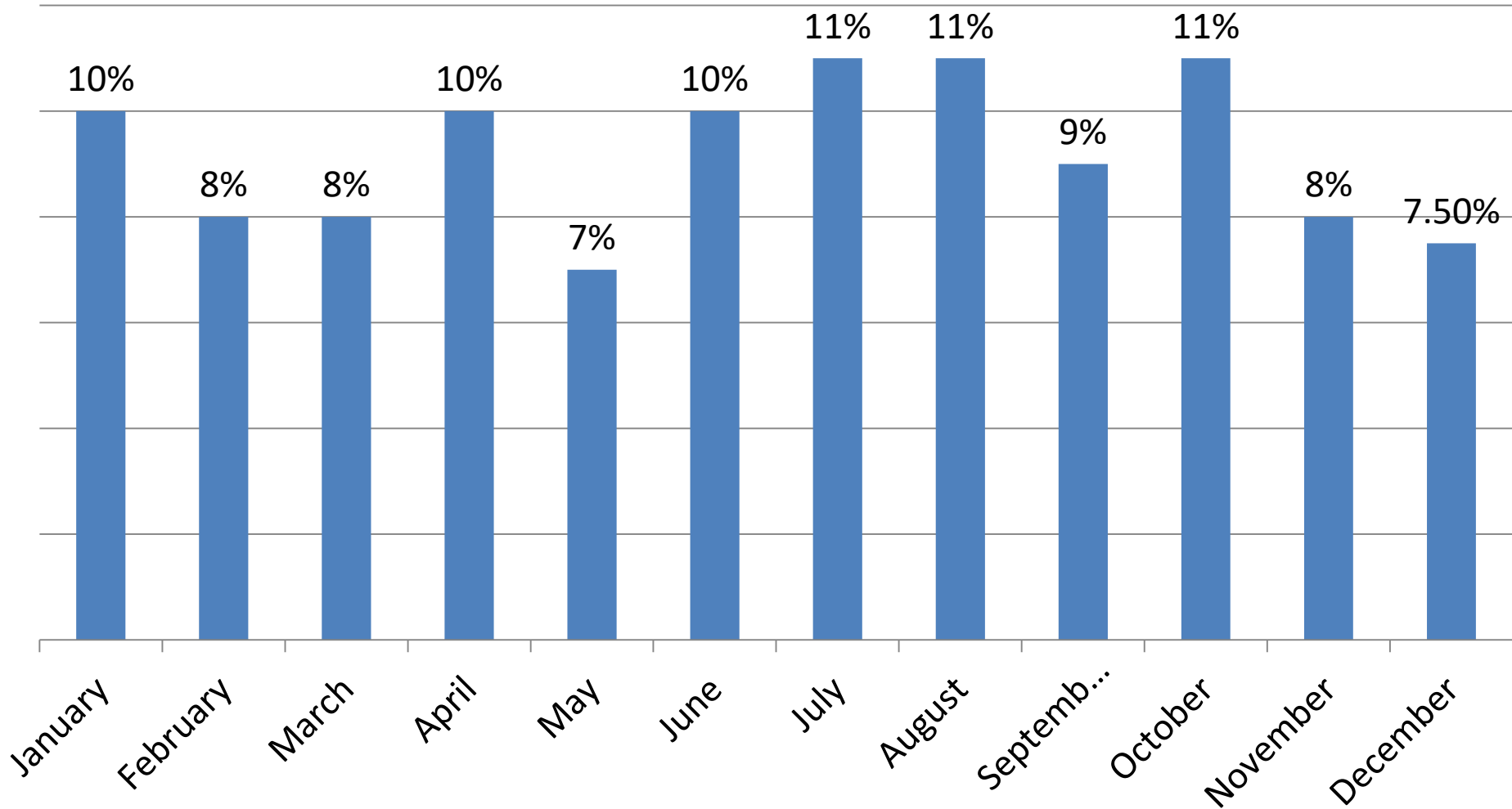


Mode of delivery:

■ NVD ■ C/S ■ ASSISTED

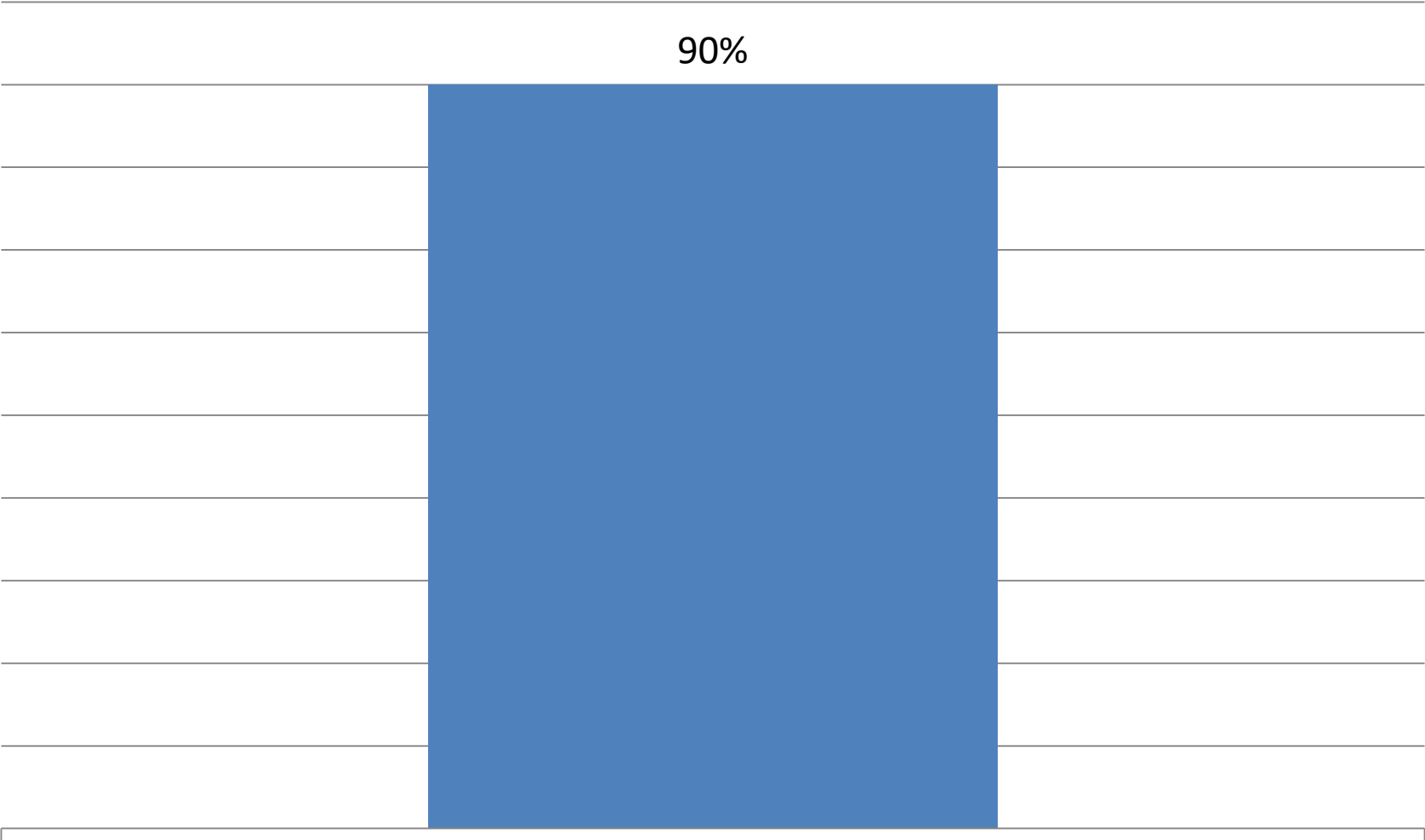


C/S Rate:



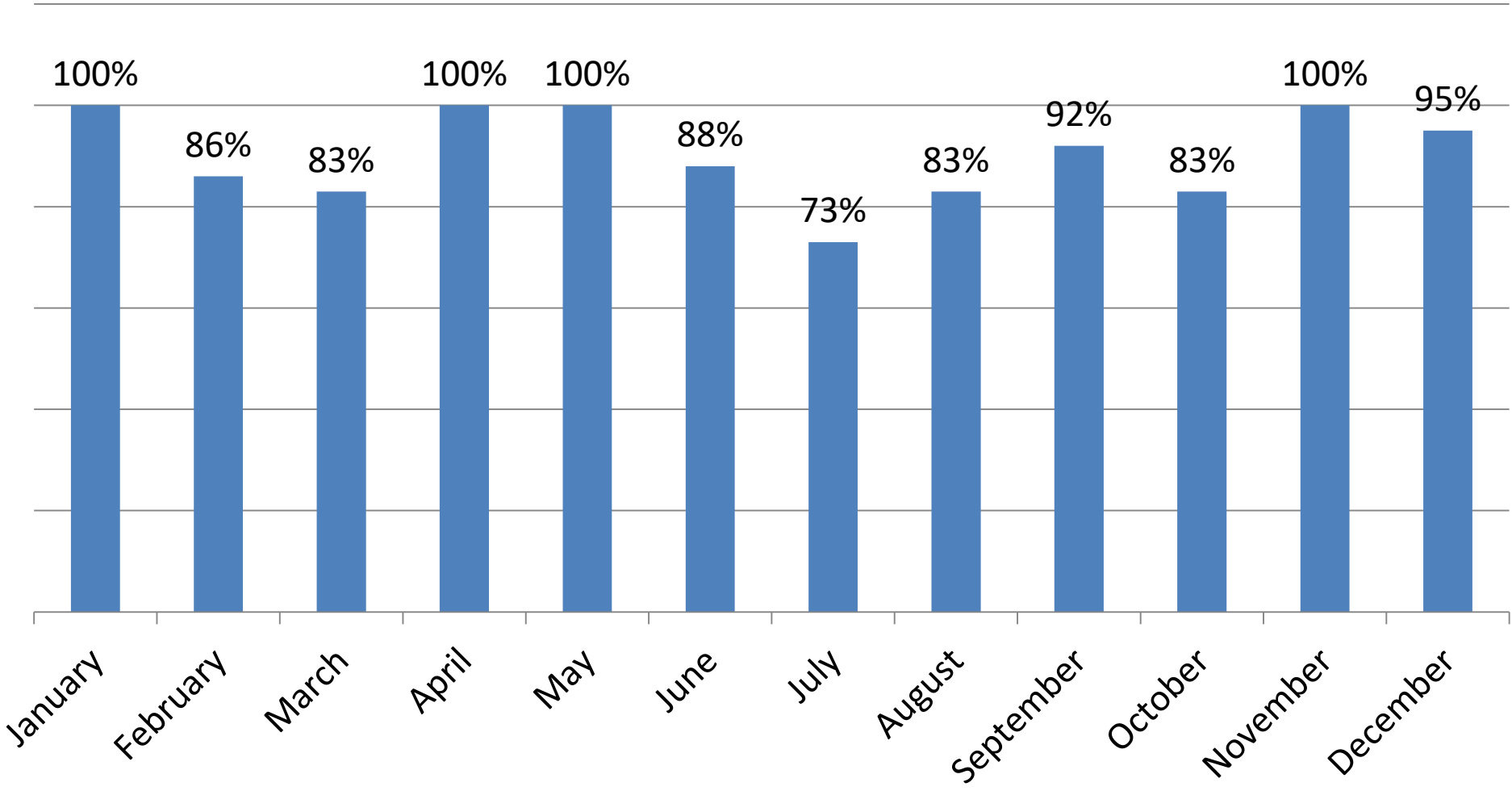
VBAC rate:

90%

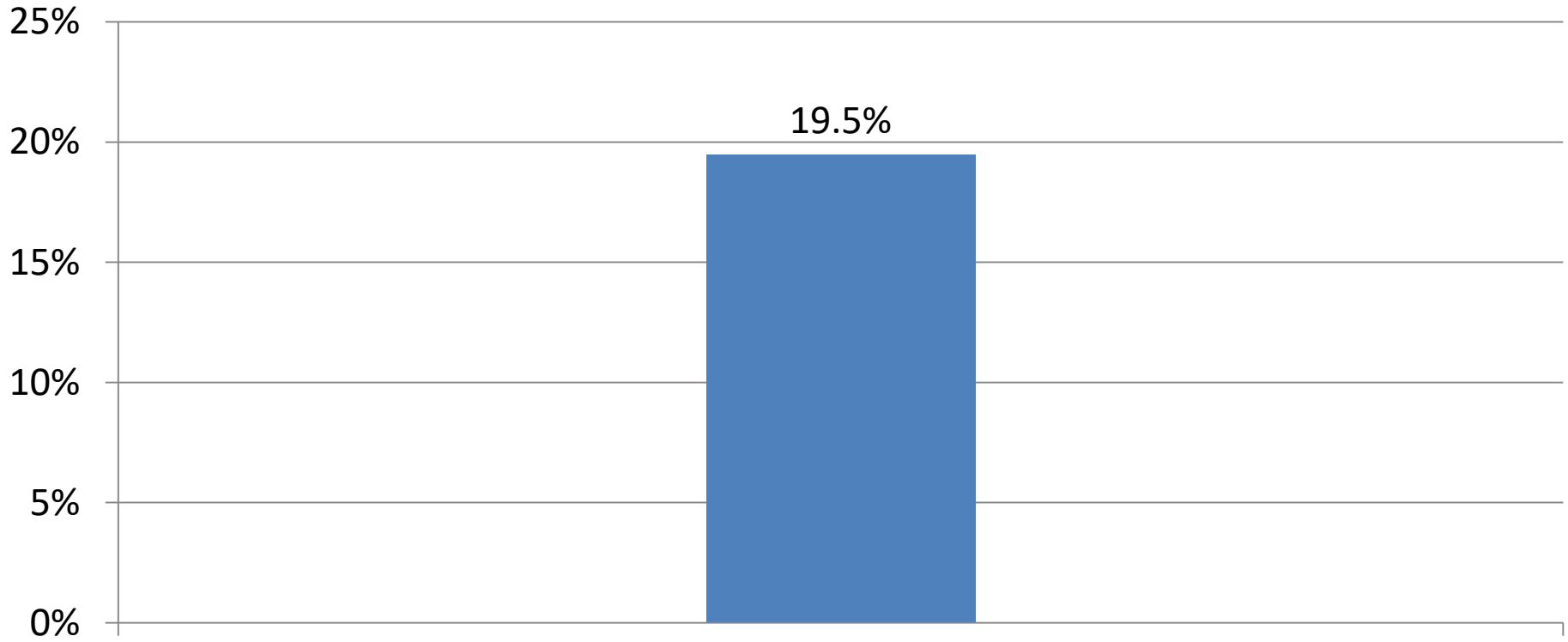


VBAC Rate
90%

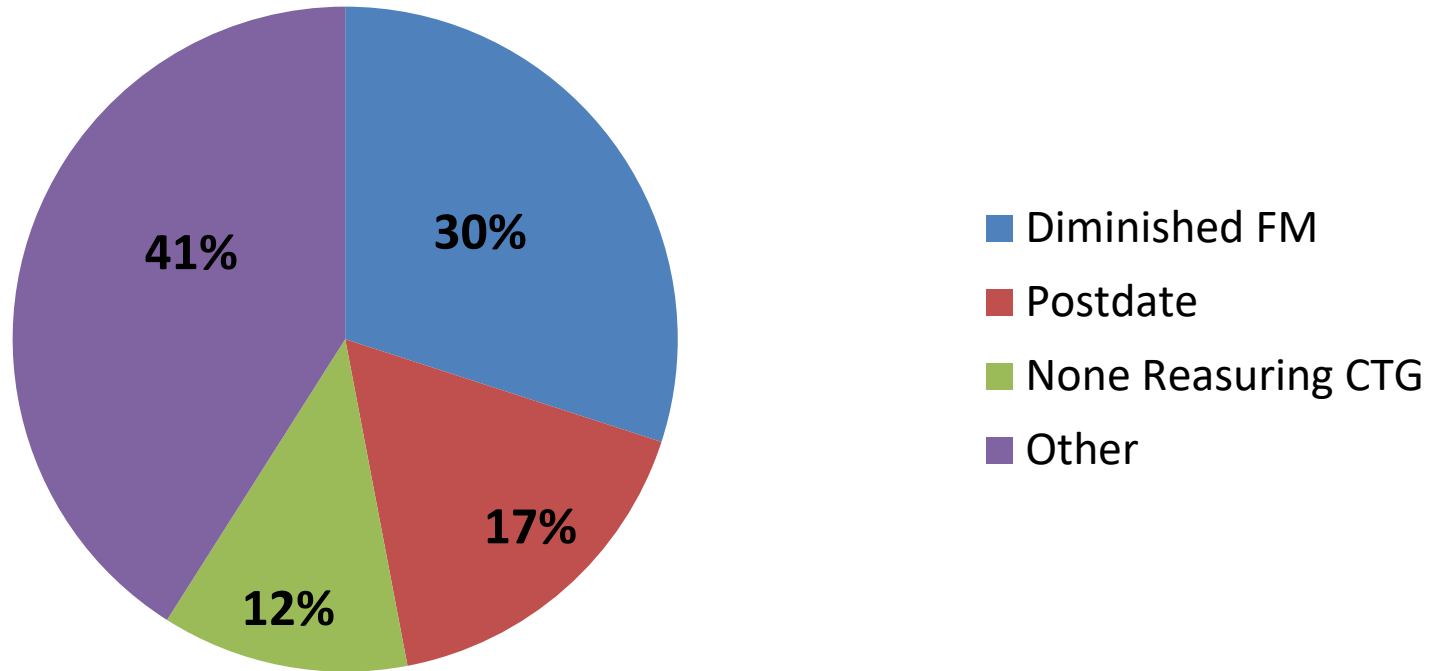
VBAC SUCCESS RATE:



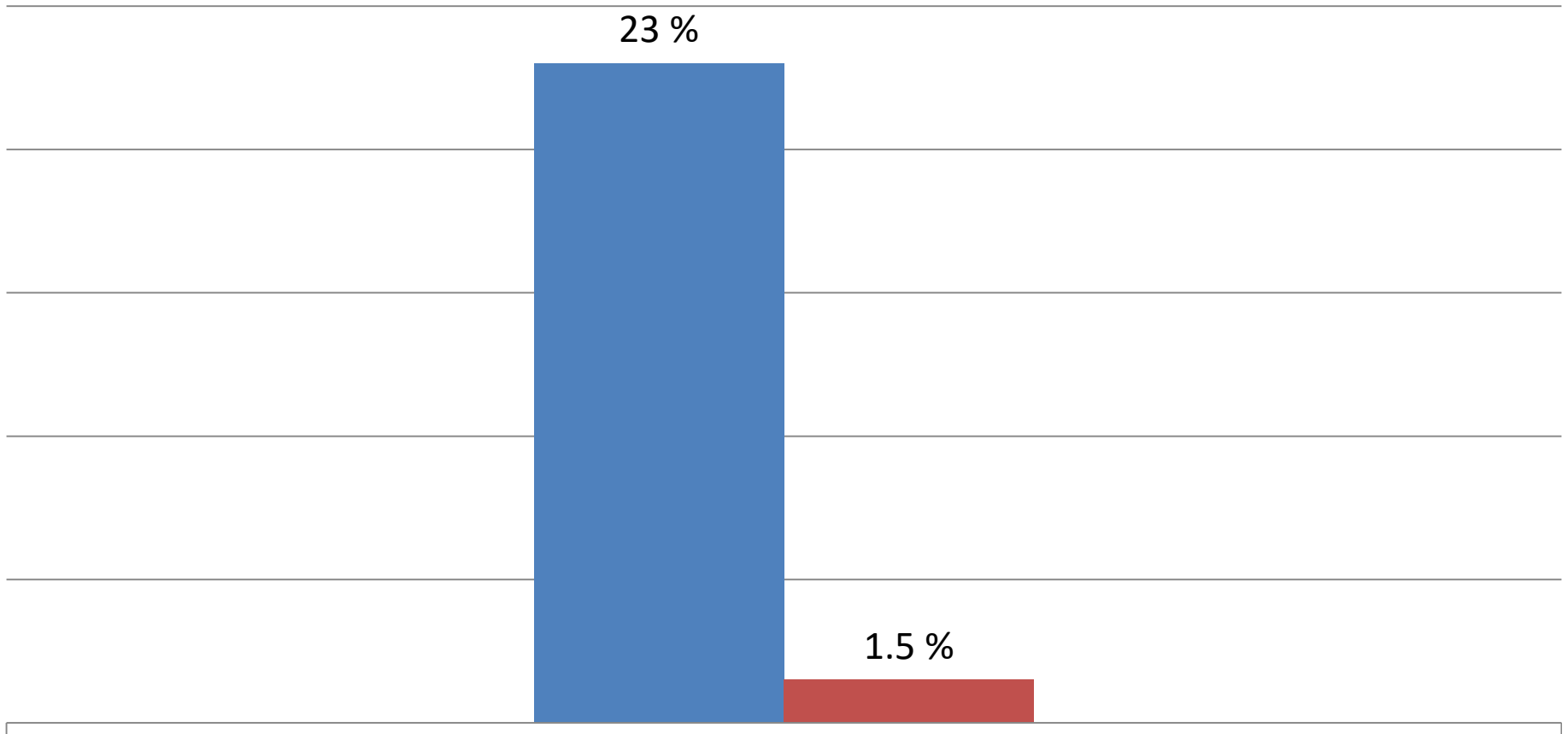
I.O.L:



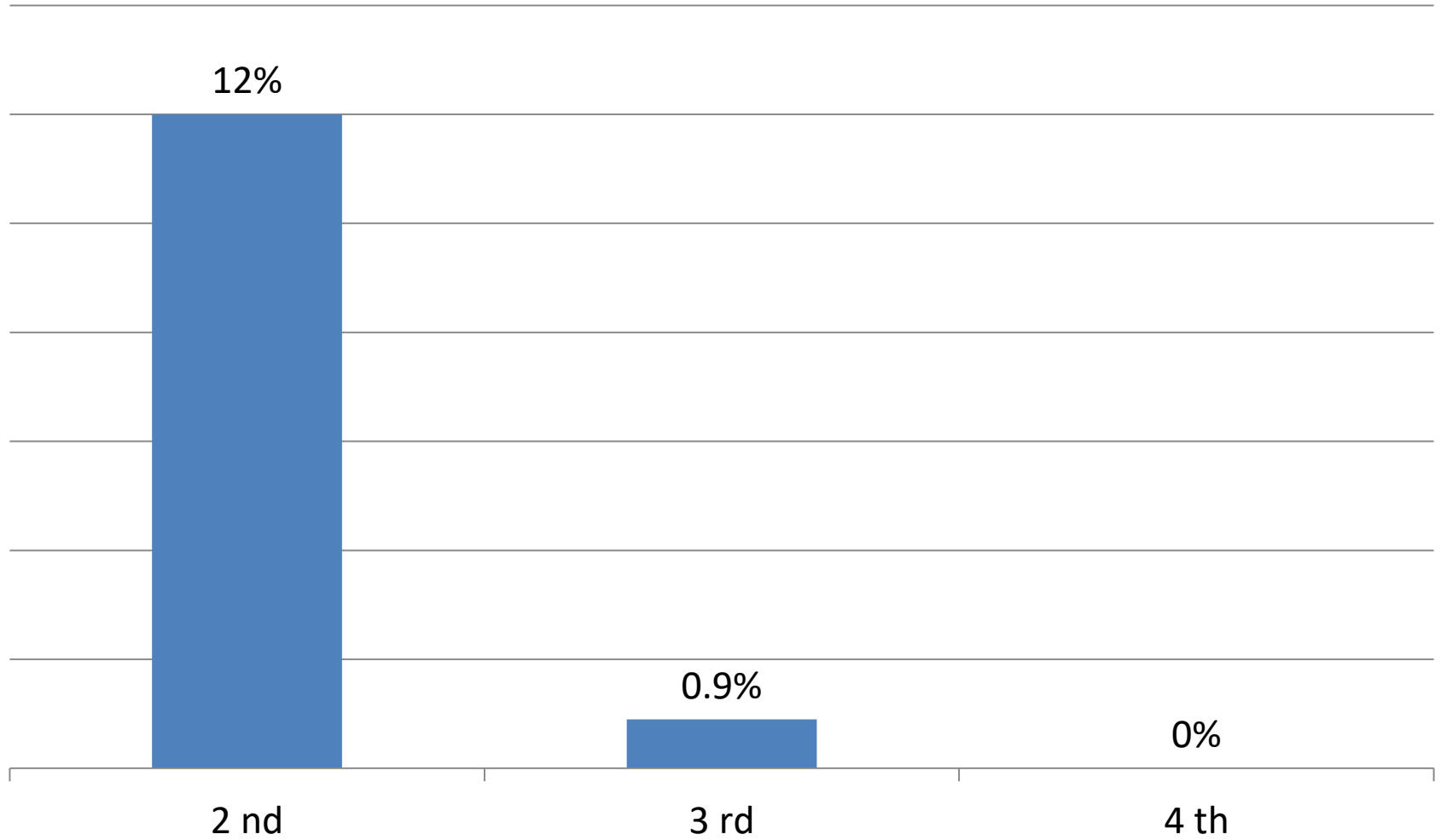
Indications of I.O.L:



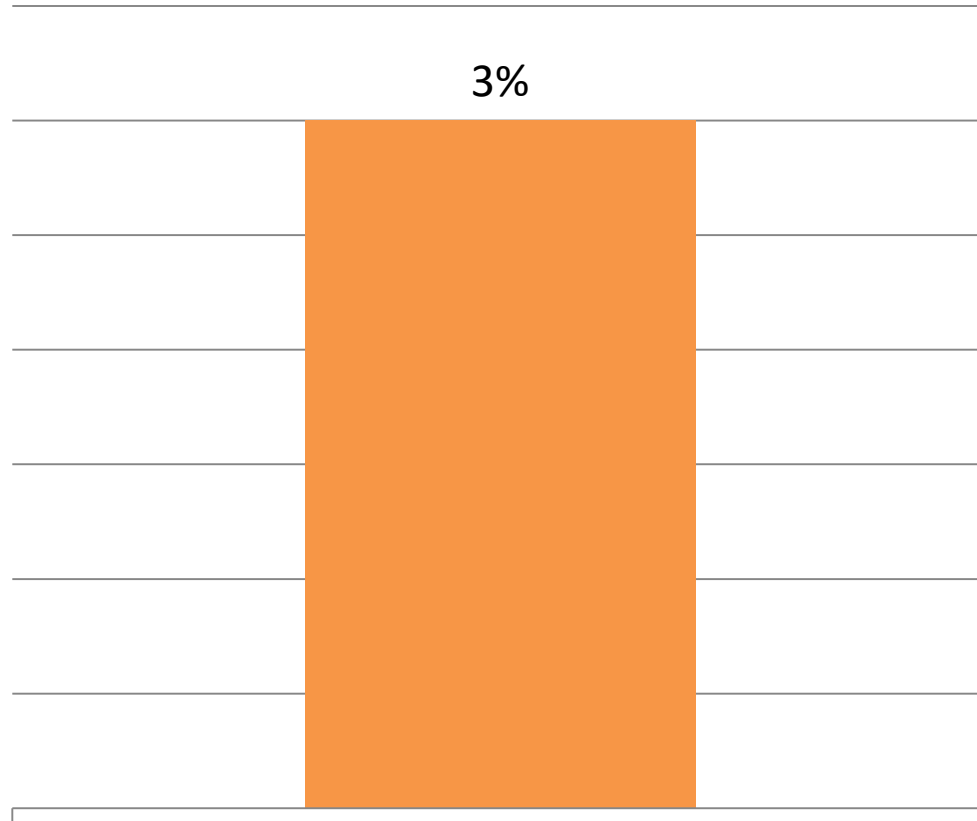
Episiotomy:



Laceration:

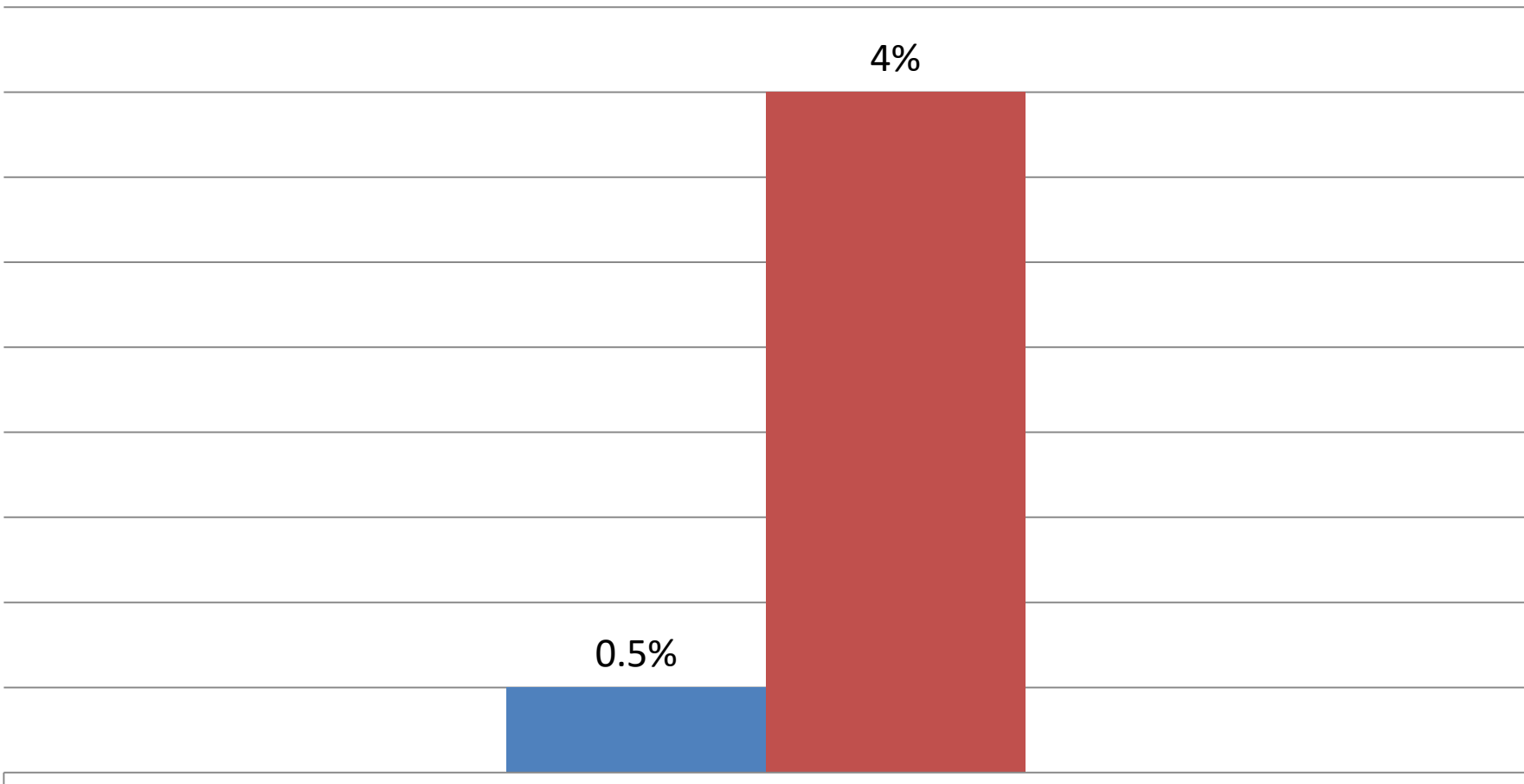


I.U.G.R.:



APH+PPH:

■ APH
■ PPH





For the Safest  delivery
& the Healthiest Start of Life

نحو ولادة آمنة و بداية صحيّة للحياة